

How To Judge Quality In Raster Graphics?



*Raster graphics are pictures made up of **pixels**, which are little colored squares. This type of graphic is **resolution-dependent**, and its quality is determined by pixel density, such as **dots per inch (DPI)** or **pixels per inch (PPI)**.*



Visit us online at:

www.mmped.com

 **Minuteman
Press** EAST DALLAS
WE DESIGN, PRINT & PROMOTE... YOU!



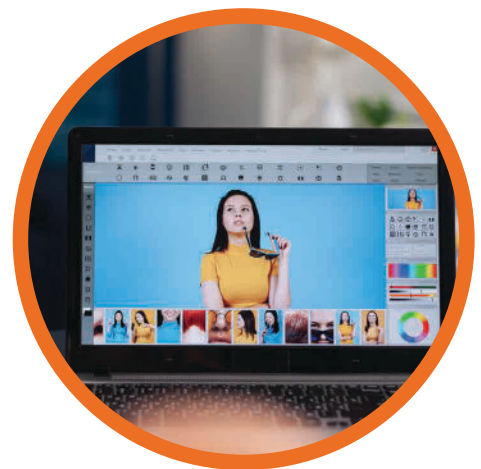
*The way to judge quality in raster graphics is simple — **Look at it. Print it (at home or on an office printer) and look at it.***



*If you can see the **dots**, if it's **blurry**, or if there's a lot of **jagged edges**, that's not a good graphic.*



*Or use a graphics program to show and **view DPI** (Canva, Photoshop, Preview, etc.)*



Visit us online at:

www.mmped.com

 **Minuteman Press** EAST DALLAS
WE DESIGN, PRINT & PROMOTE... YOU!